

Alpha 600 Series

Function Setting Editor Ver 2.4

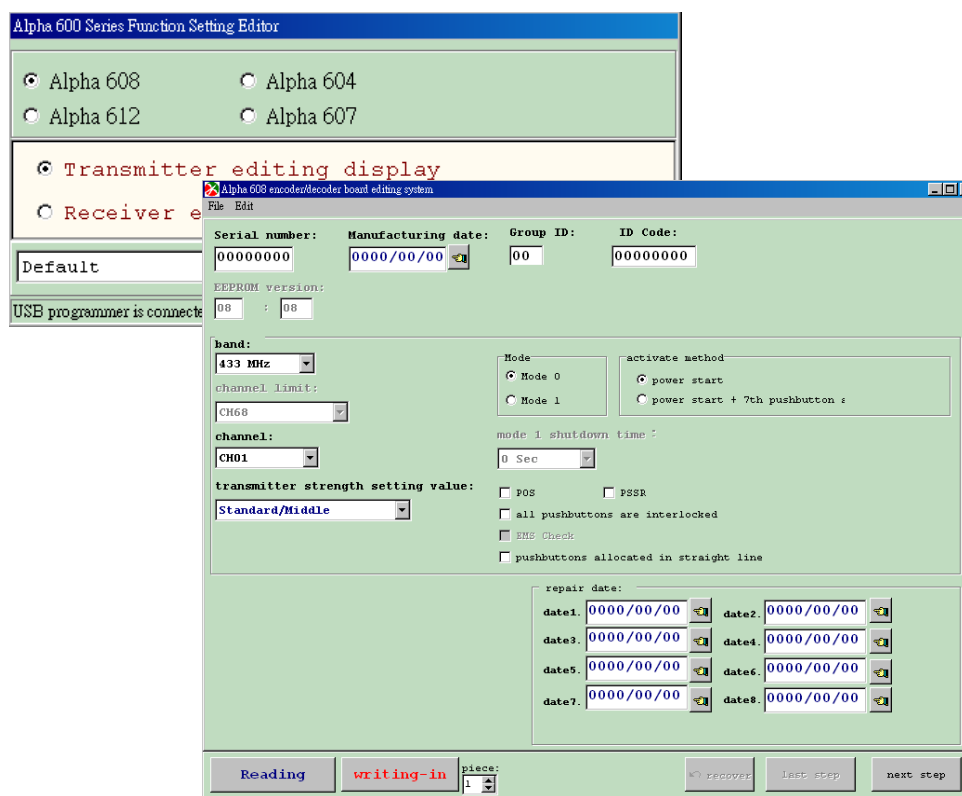


TABLE OF CONTENTS

【Alpha 608 Function Setting Editor】

1. Transmitter Editing Display.....	P. 3~11
2. Receiver Editing Display.....	P.12~17

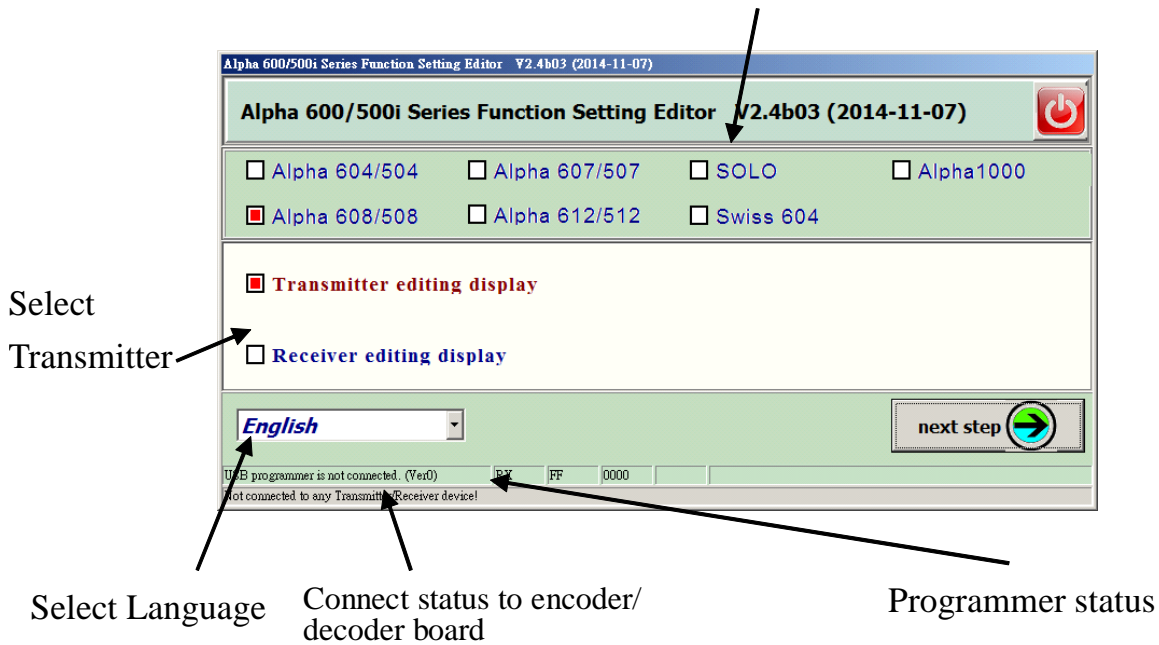
【Alpha 608 Function Setting Editor】

1. Transmitter Editing Display

Step 1:

- Left-click on alphatools.exe file
- Enter Alpha 600 Series Function Setting Program
- Select Alpha 608 on main menu, and then click Transmitter Editing Display. For other system types, follow the same steps as Alpha 608.

Selection of system type



Step 2:

Enter Alpha 608 transmitter editing system and edit the functions.

Alpha 608/508 Transmitter editing display V2.5b01 (2014-12-18)

Open Save Transmitter Receiver

Serial number: 00000000 Manufacturing date: 0000/00/00 Group ID : 00 ID : 00000000

BAND : 433 MHz Mode: mode 0 activate method: power start
mode 1 power start + 7th pushbutton activated

Channel Limit : 68 Model Shutdown Time : 0 secs
Channel : 01 POS PSSR

Transmitter power: -1 dBm Standard Pushbutton interlocked: No use
EMS Check pushbuttons allocated in straight line

Customer Memo

Reading Writing-in next step EXIT

USB programmer is connected. Not connected to any Transmitter/Receiver devi The setting status is for transmitter.

Programmer status Encoder/Decoder board status Editing status

USB programmer status:

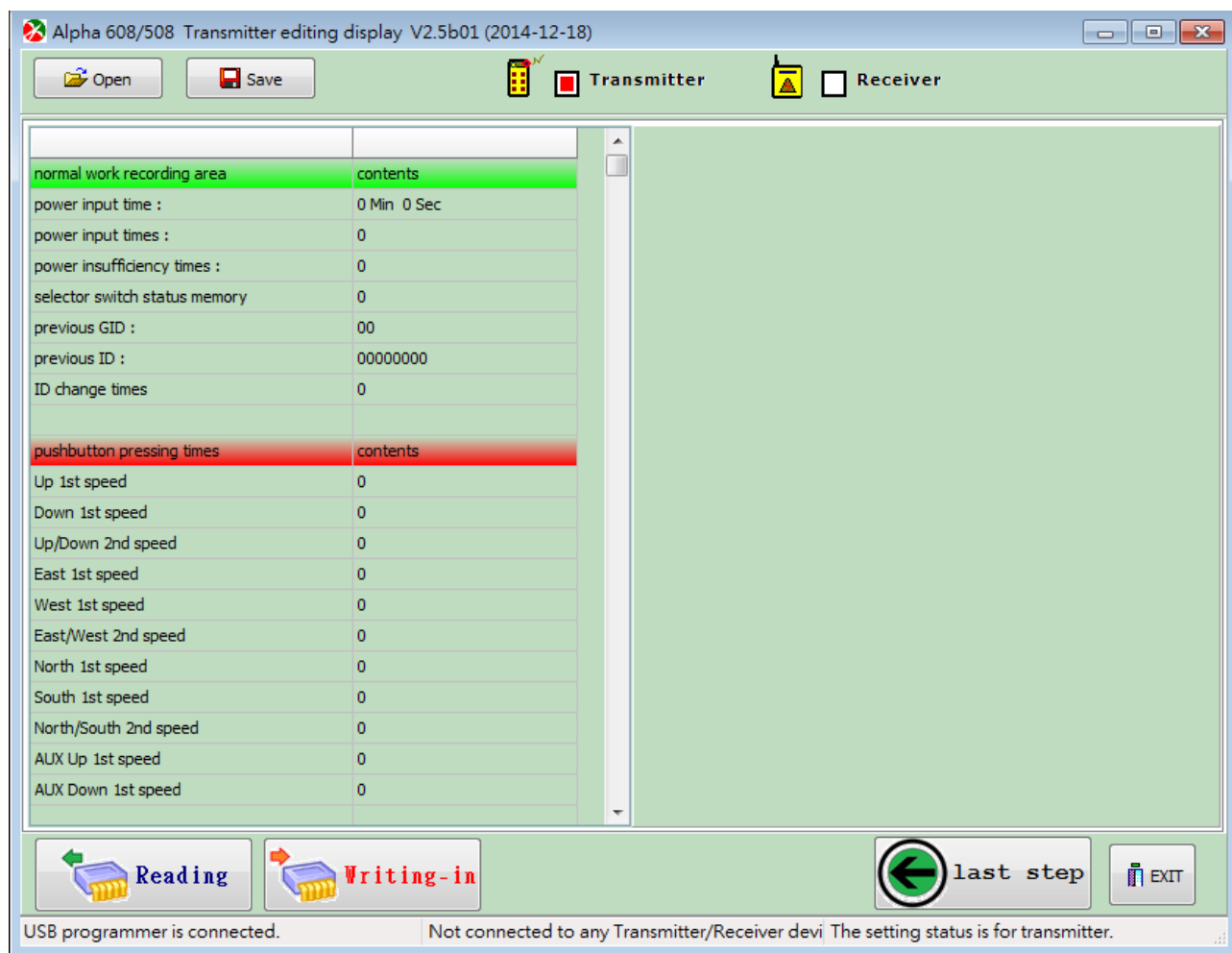
If USB programmer is connected to computer, the message column on display bottom-left corner will show “USB programmer is connected”; if not, the message will show “USB programmer disconnected.”

Encoder/Decoder board status:

It shows the system type of encoder/decoder board USB programmer is connecting. If neither encoder board nor decoder board is connected, this column will be blank. If Alpha 608 transmitter is connected, this column will show “Alpha 608 transmitter”. If the connecting system type is not the current editing one, the column will show “Non Alpha 608 transmitter”.

Step 3:

Transmitter recording area and repair date display



■ Transmitter recording items:

Power input time

Power input numbers

ID changes times

Previous GID (Group ID)

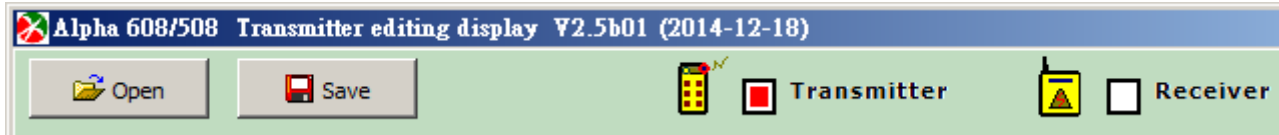
Previous working ID



Power insufficient times

Pushbutton depresses times.

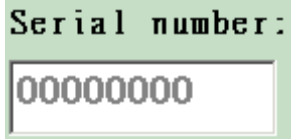
Pushbutton locks times

Menu description



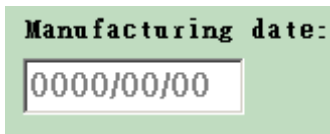
- ⊙ Open file
Open Alpha 608 file
- ⊙ Save file
Save Alpha 608 current setting
- ⊙  Transmitter/  Receiver
Switch to Transmitter/ Receiver Editing Display
- ⊙ Exit
Exit the current editing display and back to main menu display.

Serial number

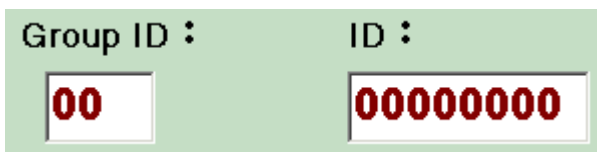


Enter serial number manually or press '+', '-' (or ▲, ▼) on the keyboard to increase or decrease the number.
(Note: It will be set as READ ONLY when goods are shipped.)

Manufacturing date: Select manufacturing date (Note: It will be set as READ ONLY when goods are shipped.)



Group ID and ID Code :

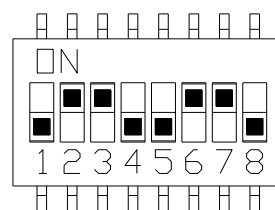
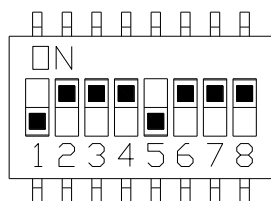


Please refer to appendix A: [Group ID Table](#)

Transmitter / receiver ID code has to be identical to operate normally. (including Group ID)

ID code and Group ID have to be even numbers.

Example: GID: 77 ID: 66



MODE 0 & 1

Mode 0 :

BAND : 433 MHz	Mode <input checked="" type="radio"/> mode 0 <input type="radio"/> mode 1	activate method <input type="checkbox"/> power start <input type="checkbox"/> power start + 7th pushbutton activated
Channel Limit : 68	Mode1 Shutdown Time : 0 secs	
Channel : 01	<input type="checkbox"/> POS <input type="checkbox"/> PSSR	
Transmitter power - 1 dBm Standard	Pushbutton interlocked No use	
	<input type="checkbox"/> EMS Check <input type="checkbox"/> pushbuttons allocated in straight line	

BAND : 433 MHz	Mode <input checked="" type="radio"/> mode 0 <input type="radio"/> mode 1	activate method <input type="checkbox"/> power start <input checked="" type="checkbox"/> power start + 7th pushbutton activated
Channel Limit : 68	Mode1 Shutdown Time : 0 secs	
Channel : 01	<input type="checkbox"/> POS <input type="checkbox"/> PSSR	
Transmitter power - 1 dBm Standard	Pushbutton interlocked No use	
	<input type="checkbox"/> EMS Check <input type="checkbox"/> pushbuttons allocated in straight line	

Mode 1 :

BAND : 433 MHz	Mode <input type="radio"/> mode 0 <input checked="" type="radio"/> mode 1	activate method <input checked="" type="checkbox"/> power start <input type="checkbox"/> power start + 7th pushbutton activated
Channel Limit : 68	Mode1 Shutdown Time : 3 mins	
Channel : 01	<input type="checkbox"/> POS <input type="checkbox"/> PSSR	
Transmitter power - 1 dBm Standard	Pushbutton interlocked No use	
	<input type="checkbox"/> EMS Check <input type="checkbox"/> pushbuttons allocated in straight line	

BAND : 433 MHz	Mode <input type="radio"/> mode 0 <input checked="" type="radio"/> mode 1	activate method <input type="checkbox"/> power start <input checked="" type="checkbox"/> power start + 7th pushbutton activated
Channel Limit : 68	Mode1 Shutdown Time : 3 mins	
Channel : 01	<input type="checkbox"/> POS <input type="checkbox"/> PSSR	
Transmitter power - 1 dBm Standard	Pushbutton interlocked No use	
	<input type="checkbox"/> EMS Check <input type="checkbox"/> pushbuttons allocated in straight line	

Selection of startup method:

Power switch / START pushbutton (7th pushbutton is activated)

If the system is started by START pushbutton (AUX1), for standard-type pushbutton configuration, the AUX1 button position is PS7; for straight-type pushbutton configuration, the AUX1 button position is PS6.

POS: When power is off, the emergency stop will be activated automatically for 3 seconds.

PSSR: When emergency stop button is released, the power will be started automatically. (Note: this function is only available under Mode 0 with system started by power switch.)

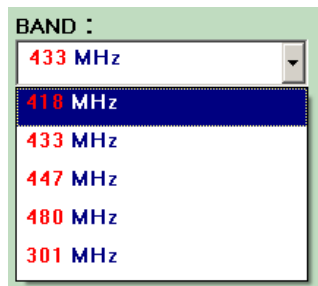
Pushbutton configuration :

Standard-type		Straight-type	
D	U	N	U
W	E	S	D
S	N	AU	E
AD	AU	AD	W

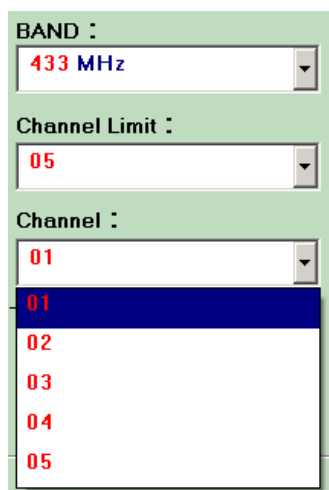
All the pushbuttons are interlocked: allows one pushbutton functioning at one time only.

EMS Check: (Check emergency stop before system is started.) After power is ON and emergency stop button is elevated, press START within 3 minutes.

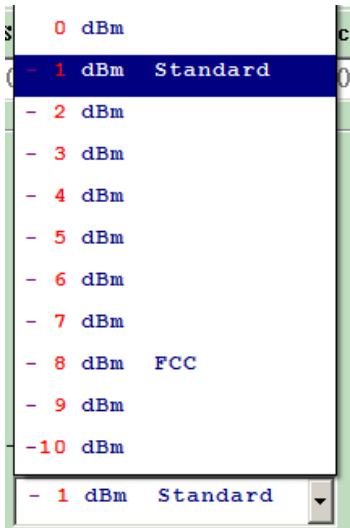
【Band selection】:



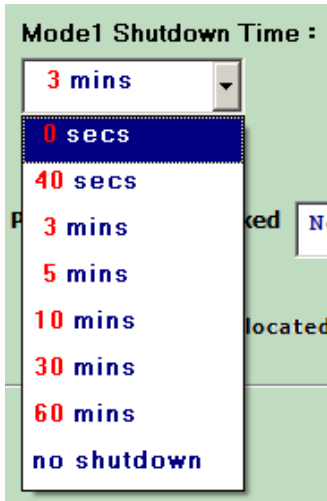
【Channel limit】: Maximum channel selectable



【Transmitting strength setting】: **+10dBm ~ -10dBm**



【Mode 1 shutdown time】:



***Mode 1: Safety mode**

After all the pushbuttons are released, transmitter starts countdown and send signals continuously. When the countdown time is up, the transmitter power will be off and stop sending signals to receiver. The receiver will be shut down immediately when no more signal is received.

Reading:

Connect transmitter programming port and click “Reading”, the setting functions will be read back to transmitter.

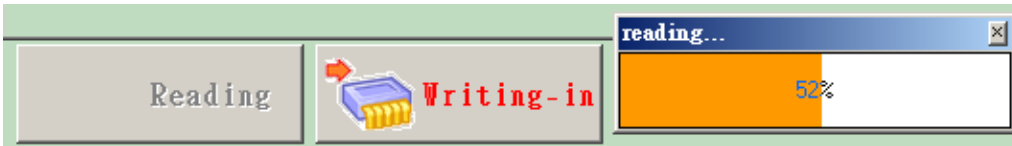
Writing-in:

Connect transmitter programming port and click “Writing-in”, the setting functions will be written into the transmitter.

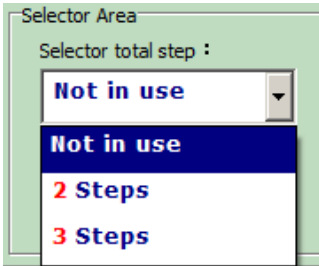
Before “Reading” or “Writing-in” is clicked:



When “Reading” or “Writing-in” is pressed, reading or writing-in will be processed.

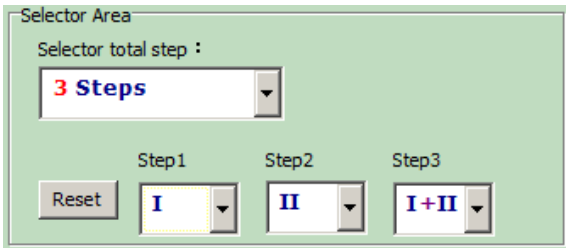


【Alpha 607 selector switch】:



Change of selector switch steps (including: Not in use, 2 steps, 3 steps & 4 steps).

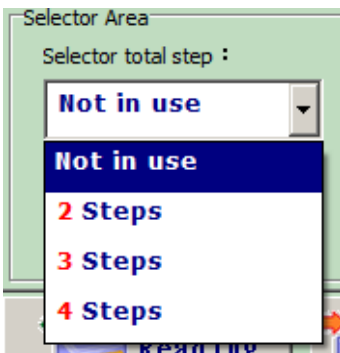
3-step selector switch:



Select I, II or I+II for each step.



【Alpha 612 selector switch】: The step is fixed. Not selectable.



Selection available: Not in use, 2, 3 or 4 steps.

4-step selector switch

Selector Area

Selector total step :

4 Steps

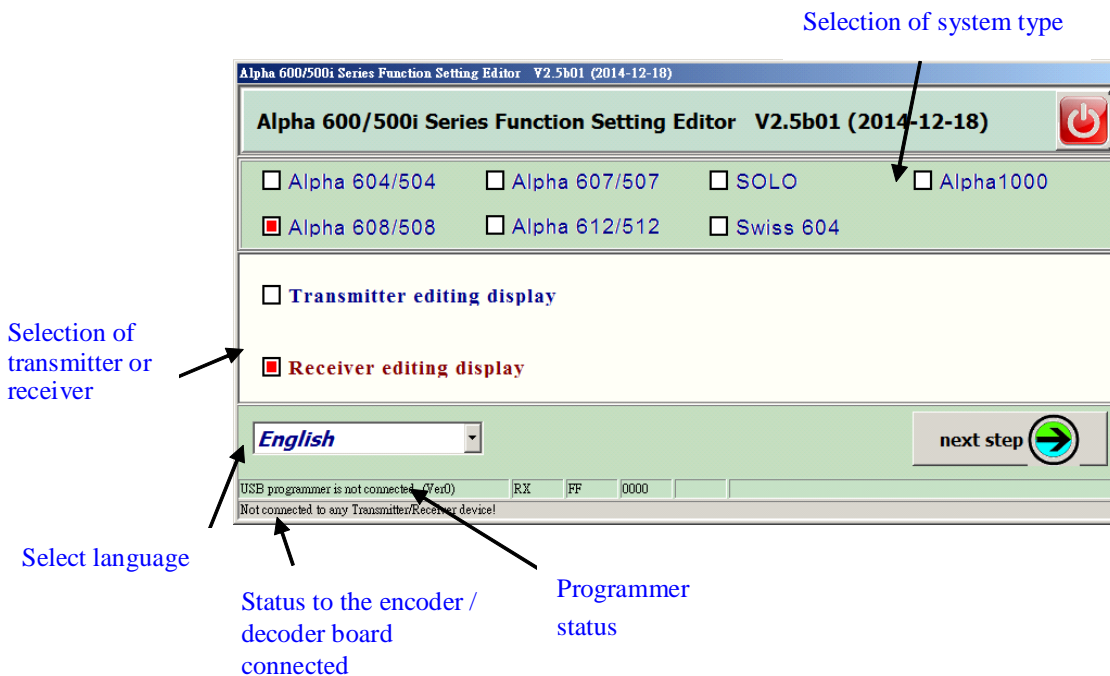
Step1	Step2	Step3	Step4
I	II	I+II	None

【Alpha 608 Function Setting Editor】

2. Receiver editing display

Step 1:

- Left-click on alphatools.exe file
- Enter Alpha 600 Series Function Setting Program
- Select “Alpha 608” on main menu, and then click “Receiver editing display”. For other system types, follow the same steps as Alpha 608.



【Programmer status】:

If USB programmer is connected to computer, the message column on display bottom-left corner will show “USB programmer is connected”; if not, the message will show “USB programmer disconnected.”

【Status to the encoder/decoder board connected】:

It shows the system type of encoder/decoder board USB programmer is connecting. If neither encoder board nor decoder board is connected, this column will be blank. If Alpha 608 transmitter is connected, this column will show “Alpha 608 transmitter”. If the connecting system type is not the current editing one, this column will show as “Not Alpha 608 transmitter”.

Step 2:

Enter Alpha 608 receiver editing system and edit the functions.

The screenshot shows the 'Alpha 608/508 Receiver editing display' software. The title bar indicates version Y2.5b01 (2014-12-18). The interface includes 'Open' and 'Save' buttons, and radio buttons for 'Transmitter' (unchecked) and 'Receiver' (checked). Fields for 'Serial number:' (00000000), 'Manufacturing date:' (0000/00/00), and 'Group ID:' (00) are present. A section titled '*pushbutton function setting:' contains a '000000' field, a 'SET' button, and four checkboxes: 'North and South relays exchange', '1st relay is not activated when it's on 2nd speed', 'Start LV', and 'Stop LV'. Below this is a 'MO Shut Down Timer' dropdown set to '5 mins'. A 'Customer Memo' field with a 'Reset' button is also visible. The bottom bar features 'Reading' and 'Writing-in' buttons, a 'next step' button with a right arrow, and an 'EXIT' button. The status bar at the bottom shows: 'USB programmer is not connected.', 'Not connected to any Transmitter/Receiver device!', and 'The setting status is for Receiver.'

Step 3:

Receiver recording area and repair date display

The screenshot shows the same software interface as Step 2, but with the 'Recording Area' section expanded. It displays two tables: 'normal work recording area' and 'abnormal work recording area'. The 'normal work recording area' table has columns for the area name and its contents. The 'abnormal work recording area' table also has columns for the area name and its contents. The status bar at the bottom shows: 'USB programmer is not connected.', 'Not connected to any Transmitter/Receiver device!', and 'The setting status is for Receiver.'

normal work recording area	contents
power input time :	0 Min 0 Sec
power input times :	0
dip-switch adjust times :	0
previous GID :	00
previous ID :	00000000



abnormal work recording area	contents
transmitter code error :	0
abnormal SQ flashes times :	0
receiver power insufficiency times :	0

■ 【Receiver recording items】：

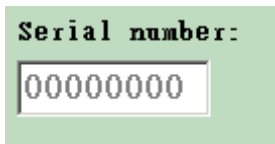
- Power input time
- Power input numbers
- Dip switch changes times
- Previous GID (Group ID)
- Previous working ID
- 2003 incorrect times
- Transmitter wrong ID times
- Abnormal SQ times
- Receiver power insufficient times

【Menu Description】



- ⊙ Open file
Open Alpha 608 file
- ⊙ Save file
Save Alpha 608 current setting
- ⊙  Transmitter/  Receiver
Switch to Transmitter/ Receiver Editing Display
- ⊙ Exit
Exit the current editing display and back to main menu display.

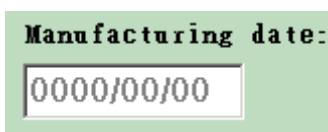
【Serial number】：



Enter serial number manually or press '+', '-' (or ▲, ▼) on the keyboard to increase or decrease the number.
(Note: It will be set as READ ONLY in factory.)

【Manufacturing date】：

Select manufacturing date (Note: It will be set as READ ONLY in factory.)



【Group ID and ID Code】:

Group ID :

00

Please refer to appendix A: [Group ID Table](#)

【Pushbutton function setting】:

*pushbutton function setting:

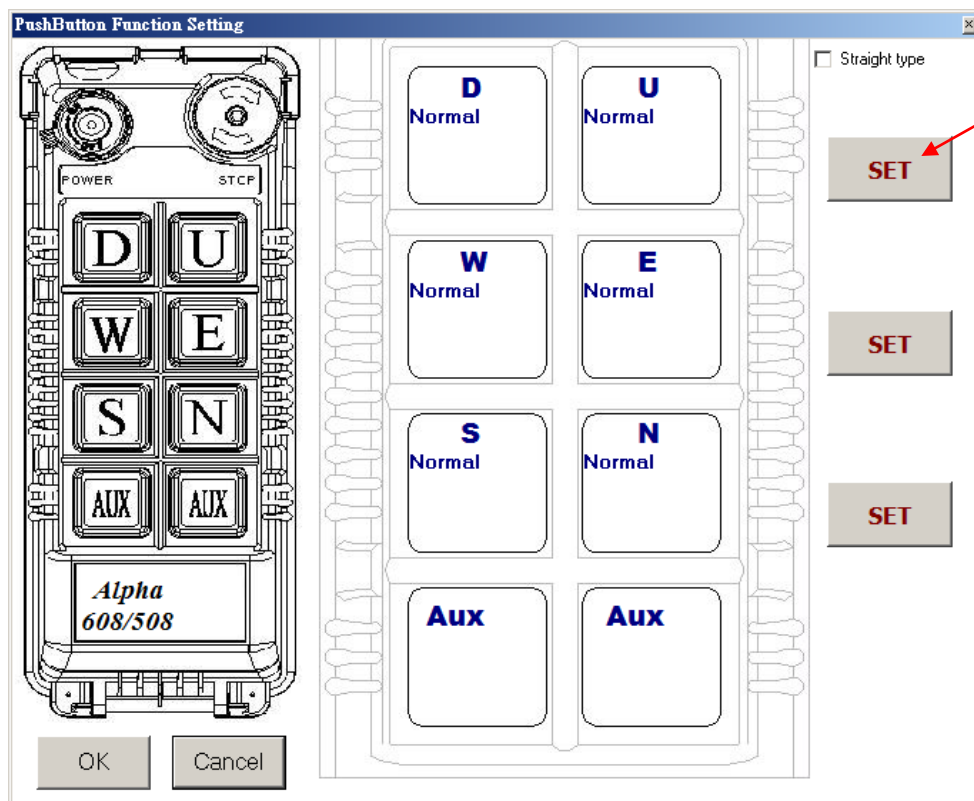
000000

SET

Left click mouse



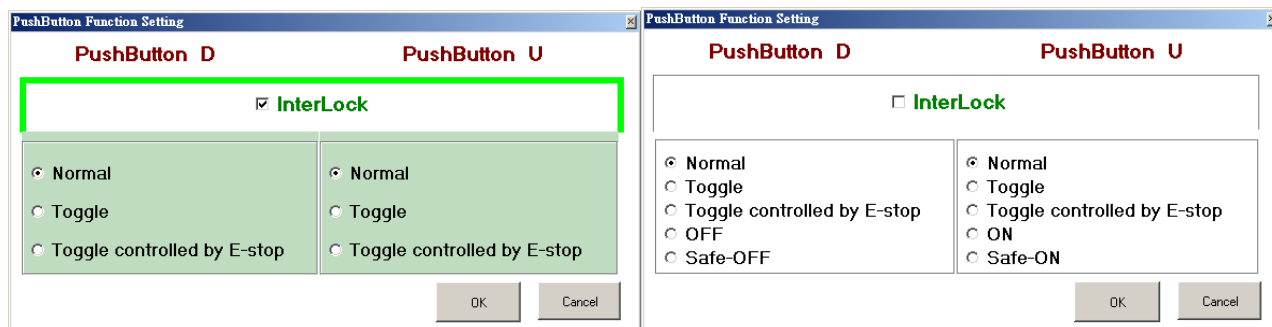
Enter the pushbutton function setting display. Left click mouse “SET” to start pushbutton function setting.



Left click mouse

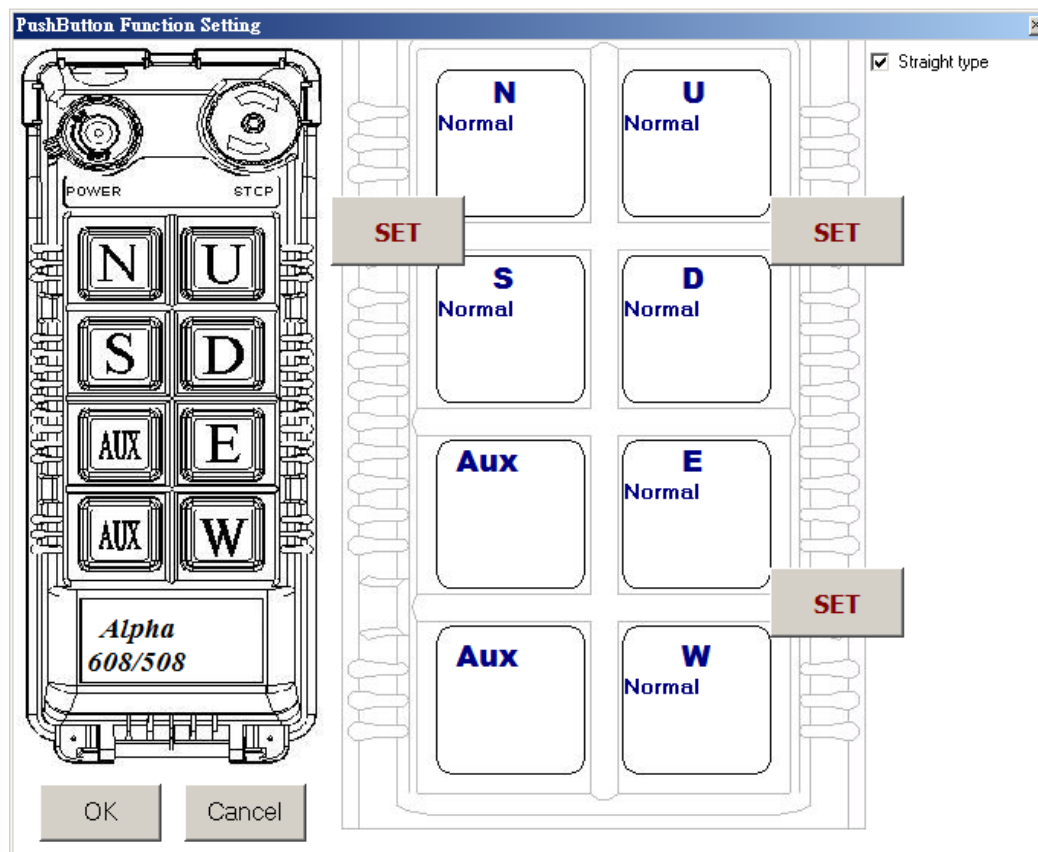


Enter the Up/Down Pushbutton Function Setting display



Select the function and click OK to correct pushbutton functions.

Pushbutton function setting display (when “Straight type” is selected)



Reading:

Connect to the receiver programming port and click “Reading”, the setting functions will be read back from the receiver.

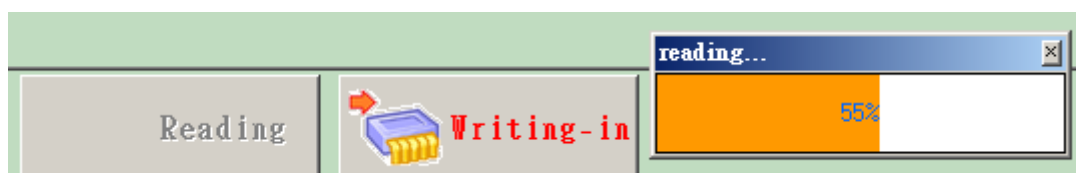
Writing-in:

Connect to the receiver programming port and click “Writing-in”, the setting functions will be written into the receiver.

Before “Reading” or “Writing-in” is clicked:



After “Reading” or “Writing-in” is clicked, reading or writing-in status will be started.



Appendix A : Group ID Table

Group ID Table

Group ID	Country
07	U7-1
12	U-9
18	U-10
1E	U-12
20	CA-1
20	CA-2
22	CA-3
24	CA-4
27	CA-5
A5	SP-2
B0	Portugal
BB	I-1
BD	I-2
BE	I-3
AA	IT
C5	BE
C8	FR-3
CA	FR-4
46	ME
B4	GE
CF	EN
C3	H-1
A3	H-2
B8	SW-3
C0	Norway
C2	Denmark
40	Brazil
48	Chile
4C	Argentina
4E	Ecuador
50	South Africa
D1	Turkey
39	U. A. E.
86	India
35	Iran

Group ID	Country
60	Australia
70	Japan
7B	Singapore
74	Korea
88	Philippines
8A	Indonesia
7F	Thailand